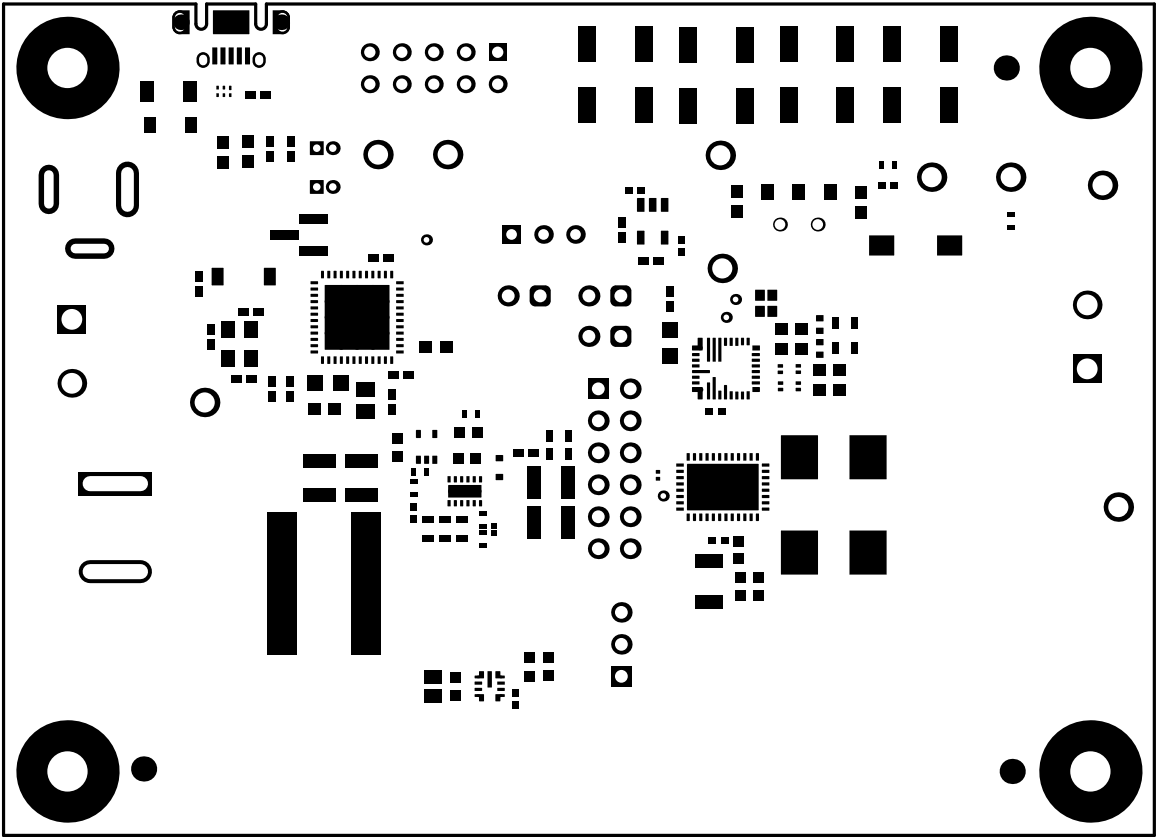
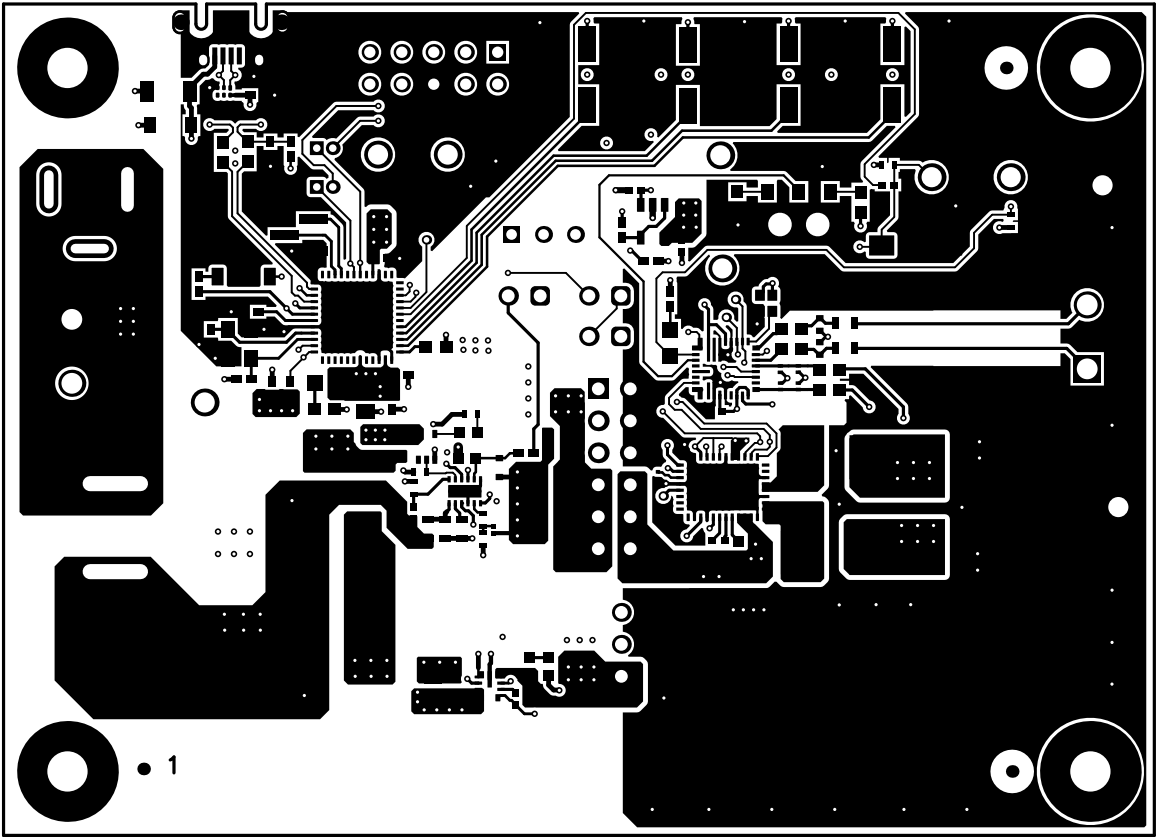


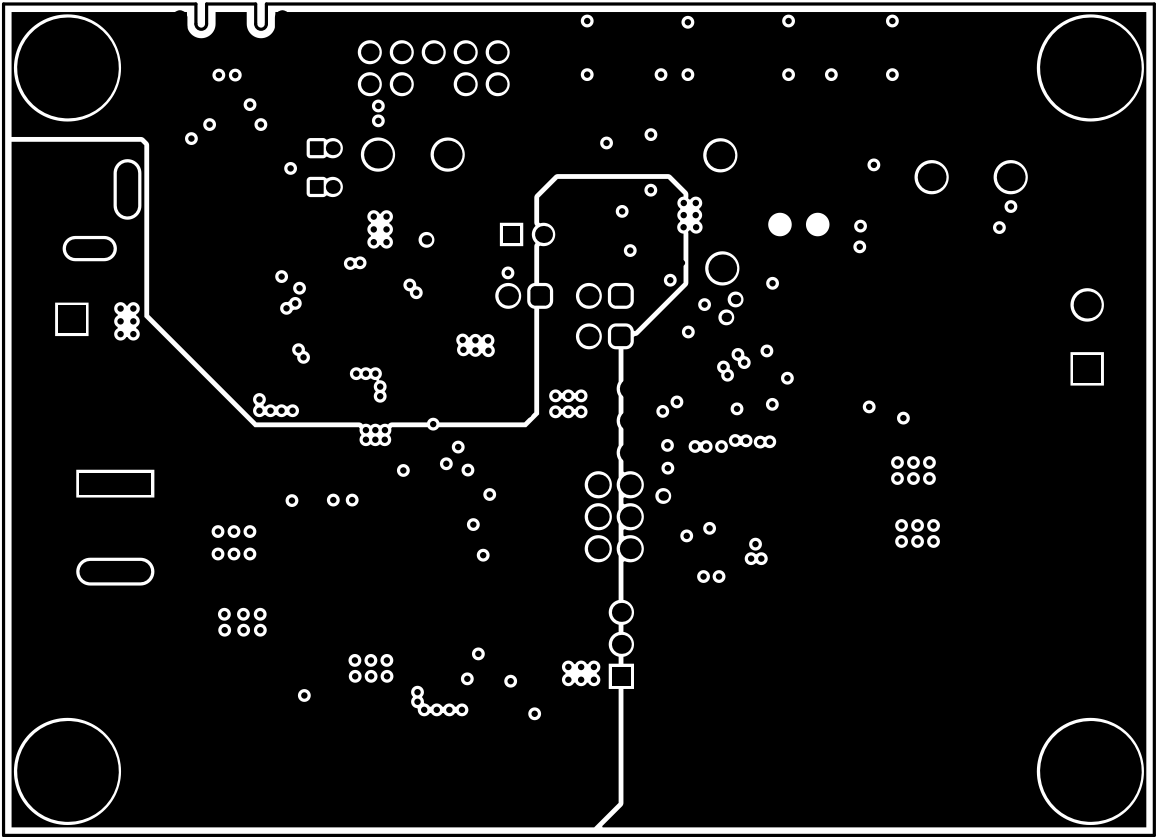
ALL ARTWORK VIEWED FROM TOP SIDE	BOARD #: AMPS211	REV: B	SUN REV: Not in version control
LAYER NAME = Top Overlay	TID #: N/A		
PLOT NAME =Top Overlay	GENERATED : 8/2/2024	3:27:20 PM	TEXAS INSTRUMENTS



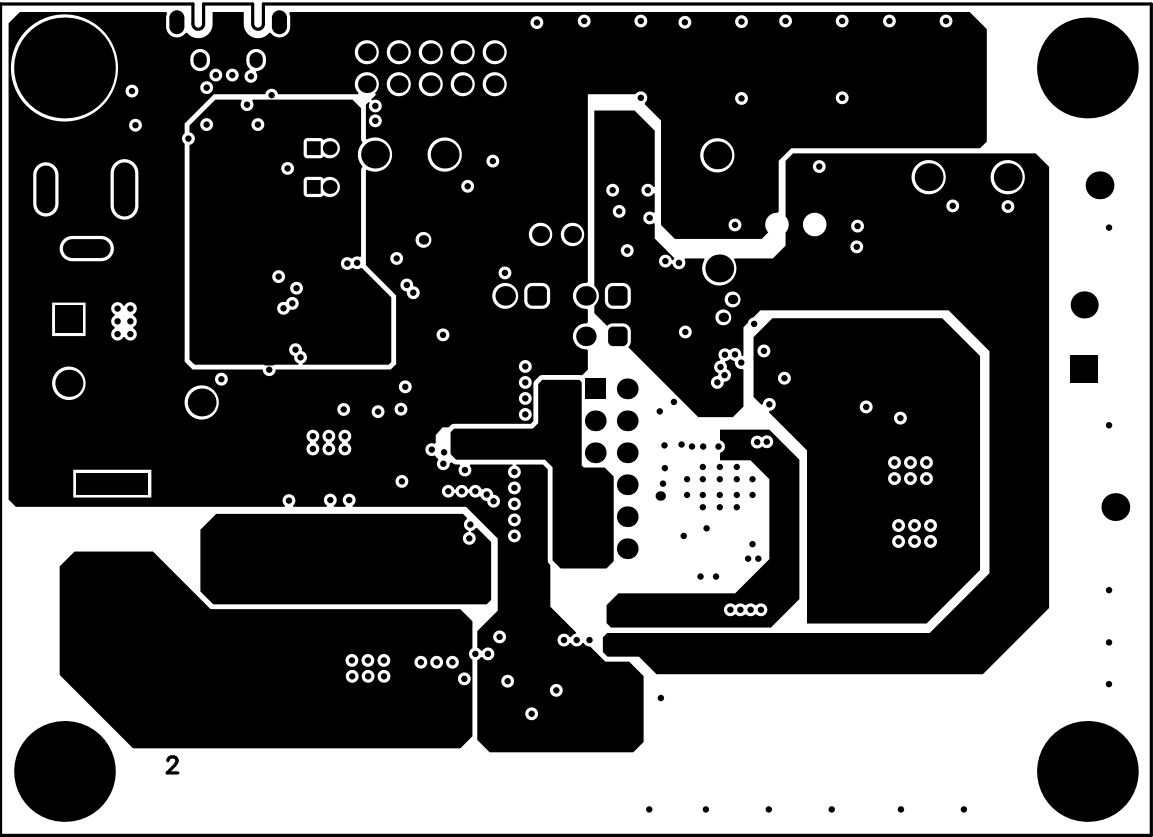
ALL ARTWORK VIEWED FROM TOP SIDE	BOARD #: AMPS211	REV: B	SUN REV: Not in version control
LAYER NAME = Top Solder	TID #: N/A		
PLOT NAME =Top Solder Mask	GENERATED : 8/2/2024 3:27:20 PM		TEXAS INSTRUMENTS



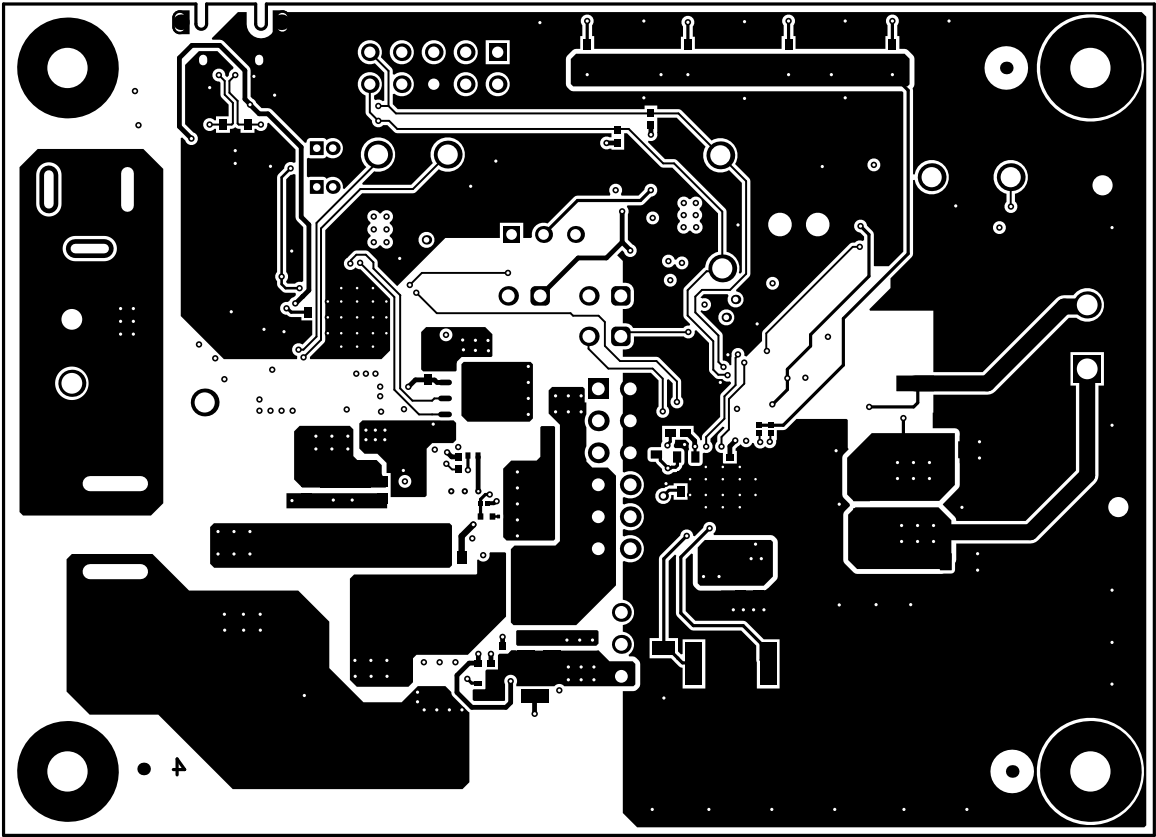
ALL ARTWORK VIEWED FROM TOP SIDE	BOARD #: AMPS211	REV: B	SUN REV: Not in version control
LAYER NAME = Top Layer	TID #: N/A		
PLOT NAME =Top Layer	GENERATED : 8/2/2024	3:27:21 PM	TEXAS INSTRUMENTS



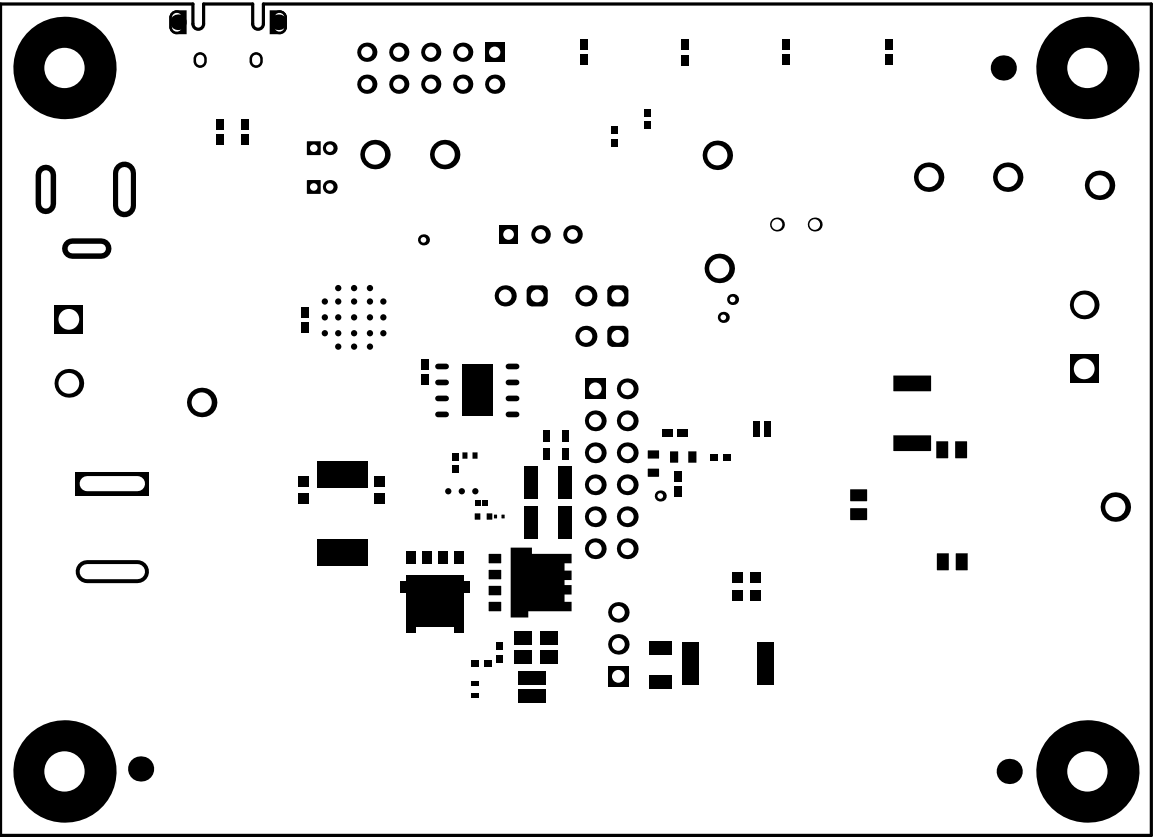
ALL ARTWORK VIEWED FROM TOP SIDE	BOARD #: AMPS211	REV: B	SUN REV: Not in version control
LAYER NAME =	TID #: N/A		
PLOT NAME =Signal 1	GENERATED : 8/2/2024 3:27:21 PM		TEXAS INSTRUMENTS



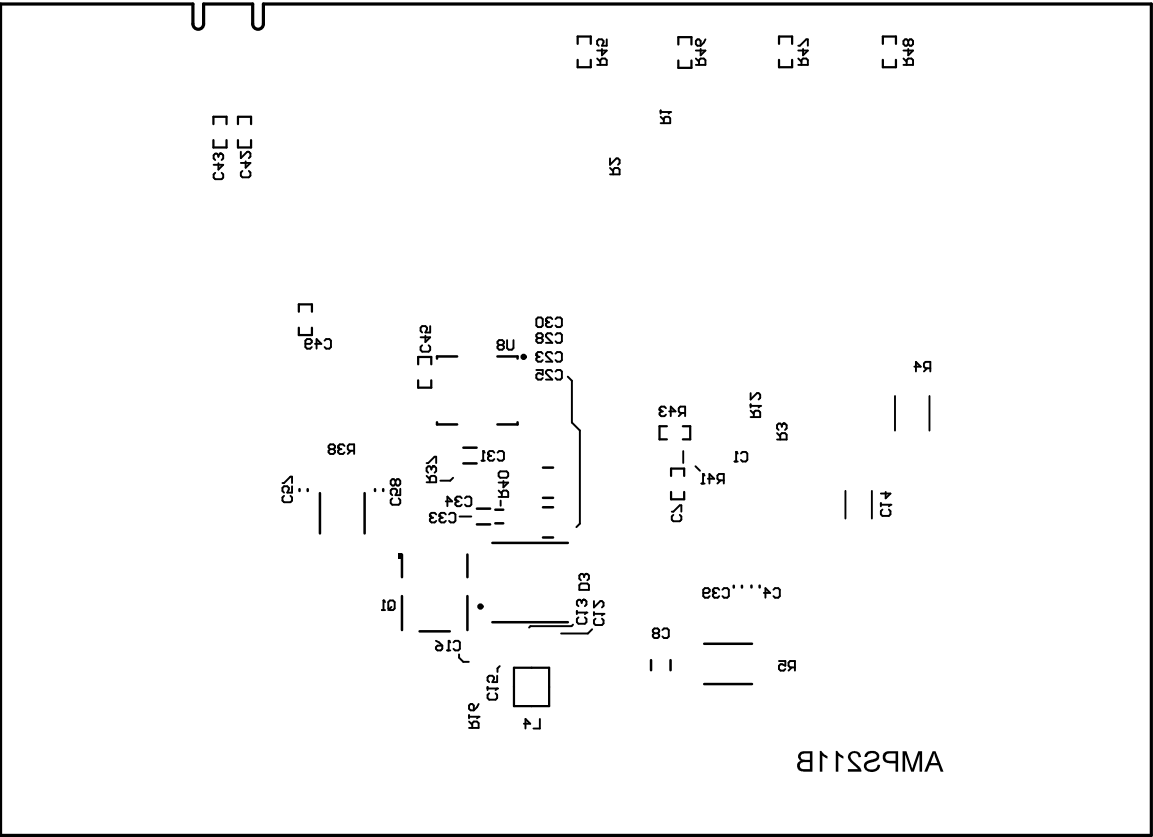
ALL ARTWORK VIEWED FROM TOP SIDE	BOARD #: AMPS211	REV: B	SUN REV: Not in version control
LAYER NAME = Power	TID #: N/A		
PLOT NAME =Signal 2	GENERATED : 8/2/2024	3:27:21 PM	TEXAS INSTRUMENTS



ALL ARTWORK VIEWED FROM TOP SIDE	BOARD #: AMPS211	REV: B	SUN REV: Not in version control
LAYER NAME = Bottom Layer	TID #: N/A		
PLOT NAME =Bottom Layer	GENERATED : 8/2/2024	3:27:21 PM	TEXAS INSTRUMENTS



ALL ARTWORK VIEWED FROM TOP SIDE	BOARD #: AMPS211	REV: B	SUN REV: Not in version control
LAYER NAME = Bottom Solder	TID #: N/A		
PLOT NAME =Bottom Solder Mask	GENERATED : 8/2/2024 3:27:22 PM		TEXAS INSTRUMENTS

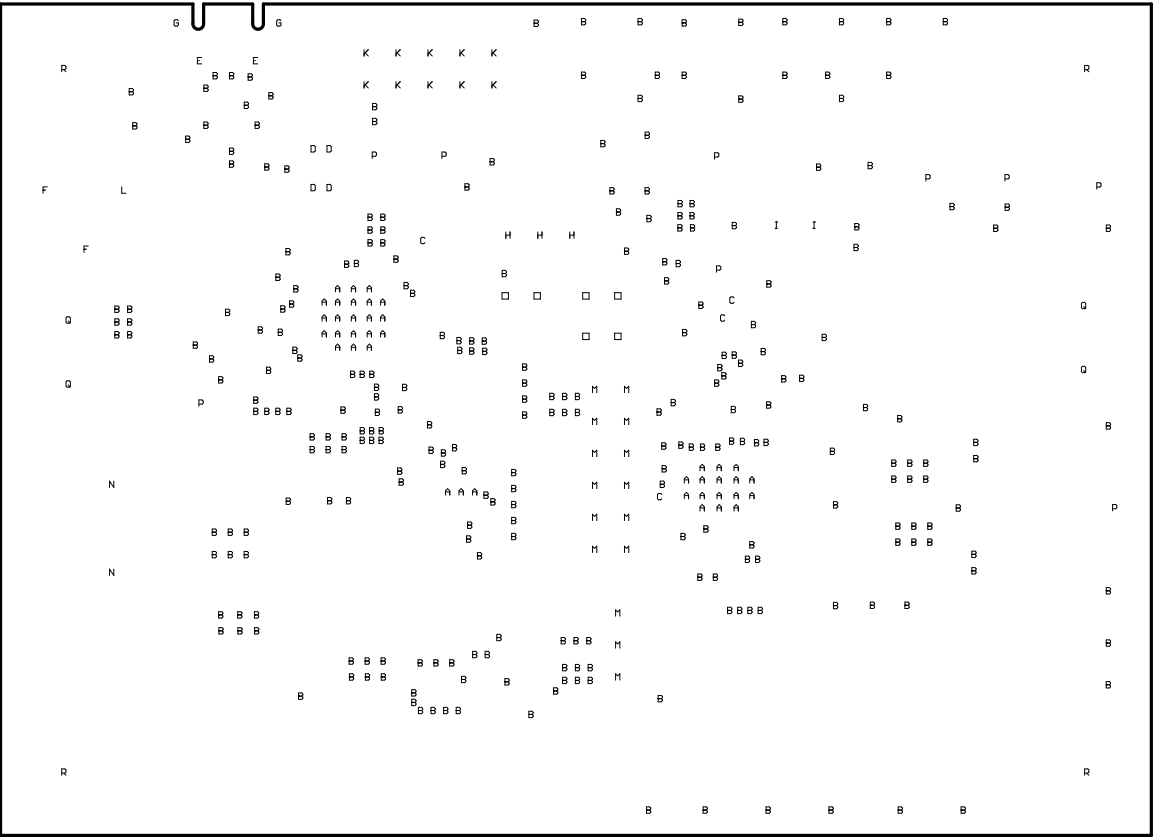


ALL ARTWORK VIEWED FROM TOP SIDE	BOARD #: AMPS211	REV: B	SUN REV: Not in version control
LAYER NAME = Bottom Overlay	TID #: N/A		
PLOT NAME =Bottom Overlay	GENERATED : 8/2/2024	3:27:22 PM	TEXAS INSTRUMENTS

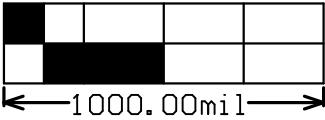
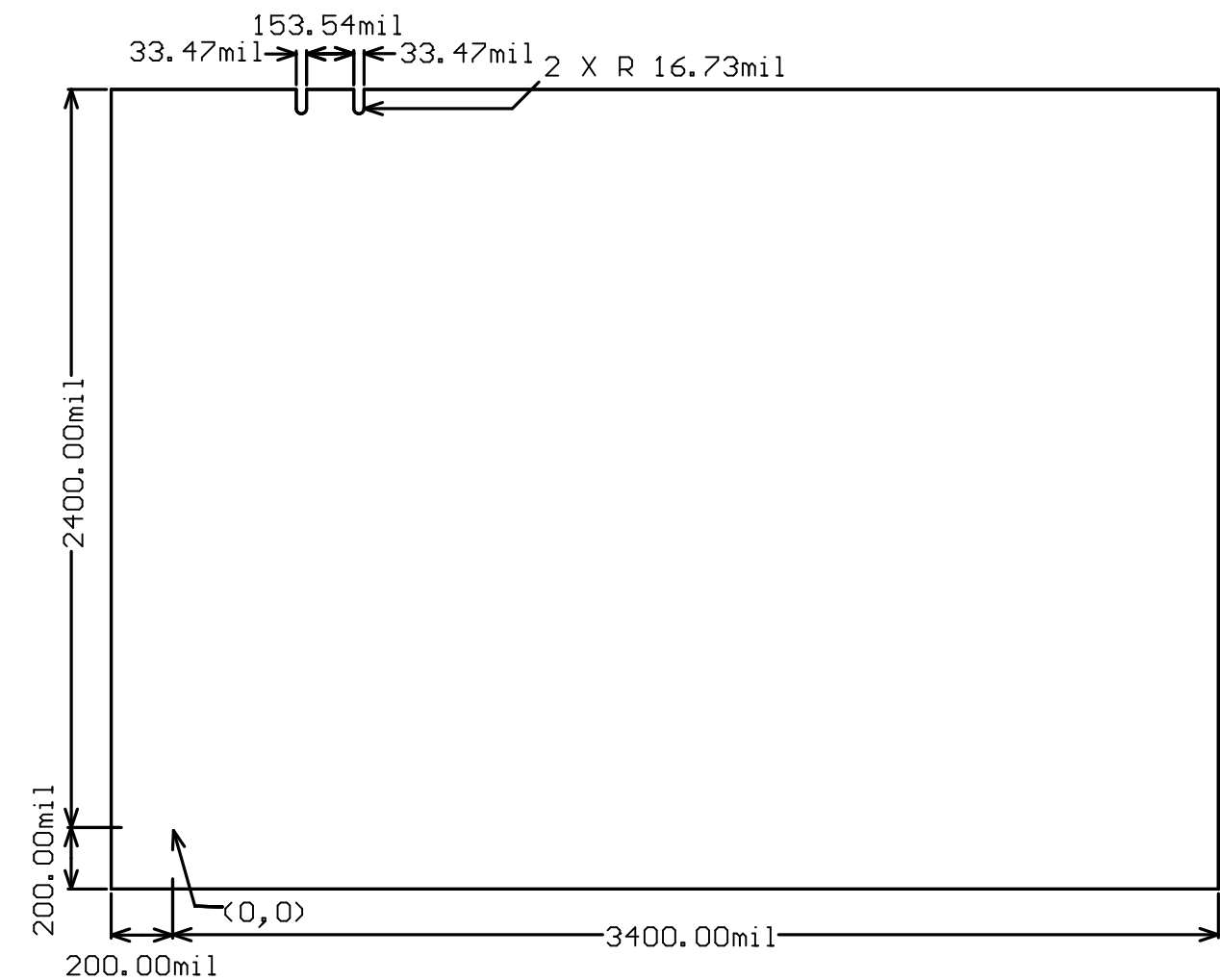
DRILL CHART:

	Symbol	Count	Hole Size	Plated	Hole Type	Hole Length	Routed Path Length	Tolerance(Mil)
4	A	40	7.87mil (0.200mm)	PTH	Round	-	-	+0/-7.87
4	B	277	10.00mil (0.254mm)	PTH	Round	-	-	+0/-10
	C	4	17.72mil (0.450mm)	PTH	Round	-	-	+/-3
	D	4	23.62mil (0.600mm)	PTH	Round	-	-	+/-3
	E	2	25.59mil (0.650mm)	PTH	Slot	33.47mil (0.850mm)	7.87mil (0.200mm)	+/-3
	F	2	29.92mil (0.760mm)	PTH	Slot	120.08mil (3.050mm)	90.16mil (2.290mm)	+/-3
	G	2	31.50mil (0.800mm)	PTH	Slot	59.06mil (1.500mm)	27.56mil (0.700mm)	+/-3
	I	2	33.47mil (0.850mm)	NPTH	Round	-	-	+/-2
	H	3	33.47mil (0.850mm)	PTH	Round	-	-	+/-3
	K	10	35.43mil (0.900mm)	PTH	Round	-	-	+/-3
	L	1	39.76mil (1.010mm)	PTH	Slot	140.16mil (3.560mm)	100.39mil (2.550mm)	+/-3
	M	15	40.00mil (1.016mm)	PTH	Round	-	-	+/-3
	□	6	40.16mil (1.020mm)	PTH	Round	-	-	+/-3
	N	2	47.24mil (1.200mm)	PTH	Slot	204.72mil (5.200mm)	157.48mil (4.000mm)	+/-3
	P	9	63.00mil (1.600mm)	PTH	Round	-	-	+/-3
	Q	4	64.96mil (1.650mm)	PTH	Round	-	-	+/-3
	R	4	125.98mil (3.200mm)	PTH	Round	-	-	+/-3
		387 Total						

Slot definitions : Routed Path Length = Calculated from tool start centre position to tool end centre position.
Hole Length = Routed Path Length + Tool Size = Slot length as defined in the PCB layout



ALL ARTWORK VIEWED FROM TOP SIDE	BOARD #: AMPS211	REV: B	SUN REV: Not in version control
LAYER NAME = DAB11 Guide	TID #: N/A		
PLOT NAME =Drill Drawing	GENERATED : 8/2/2024	3:27:22 PM	TEXAS INSTRUMENTS



ALL ARTWORK VIEWED FROM TOP SIDE	BOARD #: AMPS211	REV: B	SUN REV: Not in version control
LAYER NAME =	TID #: N/A		
PLOT NAME =Board Dimensions	GENERATED : 8/2/2024 3:27:23 PM		TEXAS INSTRUMENTS